

HELP US TO PROTECT YOU AND YOUR BABY.

Wash hands or use gel

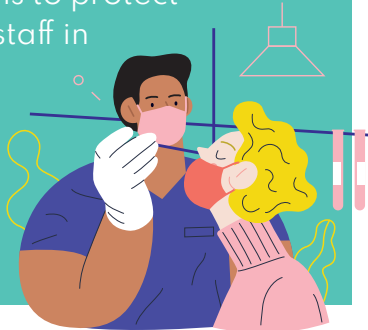
Please use the hand-gel provided before and after entering the scan room.



Covid-19 symptoms & tests (lateral flow test)

If asked to have a covid-19 test before the appointment this is to protect vulnerable patients/staff in the department.

If you have symptoms please do not attend the department.



Please treat staff with respect

Verbal and physical abuse is not acceptable.

An anxious sonographer will not be able to concentrate on scanning your baby.



We are here to carry out a complex clinical examination

- Please allow us to concentrate on scanning your baby
- Try not to distract the sonographer during the scan



Face coverings

- If you are pregnant, please wear a face covering at all times, unless exempt
- A support person must wear a face covering

Please bring a support person who can wear a face covering.



LET'S WORK TOGETHER TO KEEP EVERYONE SAFE.