



MRI SAFETY

PROTECTING PATIENTS AND PROFESSIONALS

M

MRI Department

The MRI team is a great source of specialist knowledge regarding safety queries - please get in touch.

R

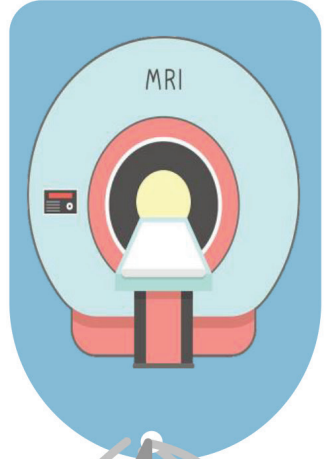
Responsibility

The MRI referral must be completed fully and all necessary information provided to adhere to policies and guidelines.

I

Implants

Are they active or passive?
Provide a make & model
Where & when were they implanted?



BEST PRACTICES FOR REFERRERS

S

Safety Questionnaire

Familiarise yourself with your department's questionnaire.

Check previous imaging.

A

Attachments

Monitoring	Drips
Pumps	Drains
Dressings	Patches

F

Factors

Does your patient have:
Any additional needs?
An inability to cooperate?
A body habitus > 120kg?

E

Extras

Renal Function (egfr)
Metal in eyes (IOFB)
Oxygen
Sedation / GA
Interpreter

Produced for MRI Safety Week

Promoting practices that keep patients and staff safe.
MRI Safety Poster Competition: organised by the SoR
Magnetic Resonance Advisory Group.

Winner

Lisa Cox

Senior Research & MRI Radiographer
Newcastle-upon-Tyne NHS Trust