

## A Multidisciplinary Census of the Radiotherapy Workforce in the UK – 1st November 2012

	<b>Index</b>	<b>Description</b>		
	<a href="#">1. Total Workforce (Posts)</a>	Number of posts stratified by Agenda for Change Band and RT provider		
	<a href="#">2. Total Workforce (WTE)</a>	Number of Whole Time Equivalent (WTE) stratified by Agenda for Change Band and RT Provider		
	<a href="#">3. Chart Total Workforce</a>	Chart to show Posts and WTE by Provider Trust and Country		
	<a href="#">4. Vacancy Rate</a>	Total Establishment with percentage vacancy in number of posts and WTE by Provider Trust – ranked, both by individual reports and reported by Head of Service		
	<a href="#">5. AfC &amp; Occupancy</a>	Total Establishment with percentage vacancy in number of posts and WTE by Provider Trust – ranked		
	<a href="#">6. Ratio SCoR to IPEM</a>	Number of WTE to give percentage SCoR and IPEM staff against Total establishment by RT Provider and Country		
	<a href="#">7. WTE by AfC Band</a>	WTE for SCoR and different IPEM professions by AfC band		

# A Multidisciplinary Census of the Radiotherapy Workforce in the UK – 1st November 2012

Total Establishment: Number of Posts

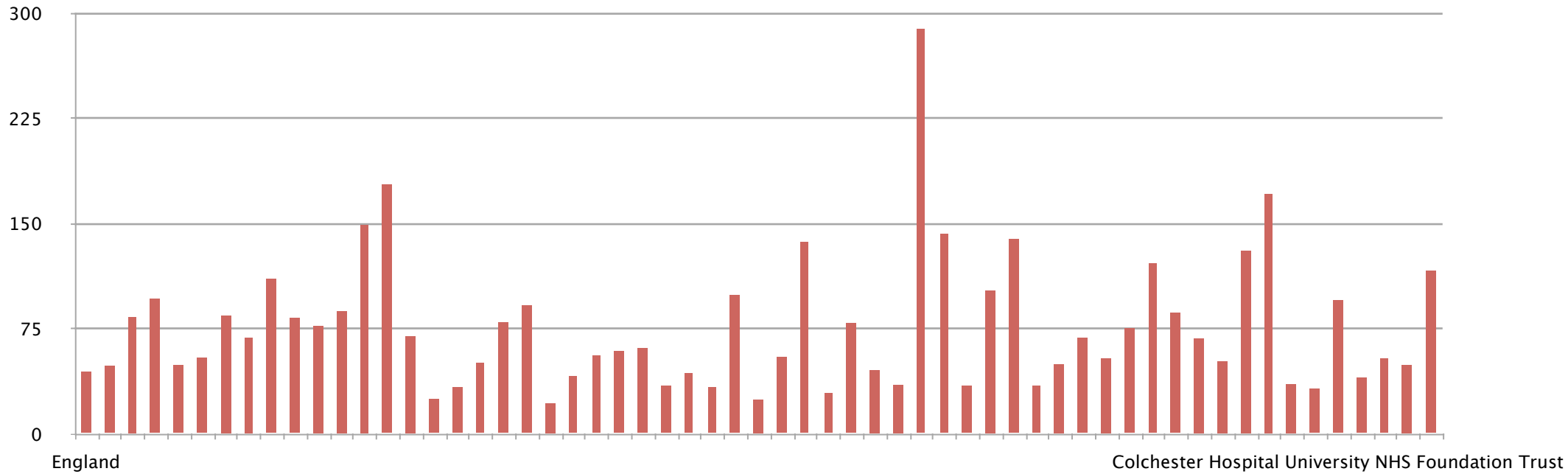
Highlighted in blue = Data missing from 2012 census and so data from 2011 census is used

SCOR Census of the Radiotherapy Workforce in the UK – 1st November 2012 – Except RT Helpers and Admin staff

Country	RT Provider Trust / Health Board	Agenda for Change Banc 3	4	5	6	7	8a	8b	8c	8d	9	N/A	Total	2011 figure	Change from 2011 census	Rank
England	Barking, Havering and Redbridge University Hospitals NHS Trust	0	3	6	3	5	3	1	0	0	0	0	21	22	-4.5%	1500.0%
	Barts Health NHS Trust	0	0	7	8	13	5	1	0	0	0	0	34	36	-5.6%	1400.0%
	Brighton and Sussex University Hospitals NHS Trust	0	1	10	17	9	9	0	0	0	0	0	46	57	-19.3%	300.0%
	Cambridge University Hospitals NHS Foundation Trust	0	5	16	16	23	7	3	0	0	0	0	70	67	4.5%	4000.0%
	Colchester Hospital University NHS Foundation Trust	1	3	6	22	10	1	1	0	0	0	0	44	41	7.3%	5100.0%
	Derby Hospitals NHS Foundation Trust	0	5	8	18	10	2	1	0	0	0	0	44	55	-20.0%	100.0%
	East and North Hertfordshire NHS Trust	2	2	16	13	18	8	2	1	0	0	0	62	57	8.8%	5600.0%
	Gloucestershire Hospitals NHS Foundation Trust	3	2	10	30	6	2	1	0	0	0	0	54	59	-8.5%	900.0%
	Guy's and St Thomas' NHS Foundation Trust	2	0	18	16	25	16	1	1	0	0	0	79	82	-3.7%	1800.0%
	Hull and East Yorkshire Hospitals NHS Trust	0	0	17	17	10	2	1	0	0	0	0	47	49	-4.1%	1600.0%
	Imperial College Healthcare NHS Trust	0	0	12	11	17	8	1	0	0	0	0	49	57	-14.0%	500.0%
	Lancashire Teaching Hospitals NHS Foundation Trust	2	9	18	35	13	2	0	0	0	0	0	79	68	16.2%	6100.0%
	Leeds Teaching Hospitals NHS Trust	0	4	30	45	14	3	0	1	0	0	0	97	95	2.1%	3400.0%
	Maidstone and Tunbridge Wells NHS Trust	0	0	18	27	25	7	1	1	0	0	0	79	73	8.2%	5300.0%
	Norfolk and Norwich University Hospitals NHS Foundation Trust	3	1	10	21	14	1	1	0	0	0	0	51	53	-3.8%	1700.0%
	North Cumbria University Hospitals NHS Trust	0	0	4	3	6	2	1	0	0	0	0	16	15	6.7%	5000.0%
	North Middlesex University Hospital NHS Trust	0	0	5	5	10	4	0	1	0	0	0	25	27	-7.4%	1200.0%
	Northampton General Hospital NHS Trust	0	1	9	14	9	2	1	0	0	0	0	36	39	-7.7%	1100.0%
	Nottingham University Hospitals NHS Trust	0	2	16	18	21	6	1	1	0	0	0	65	64	1.6%	3300.0%
	Oxford University Hospitals NHS Trust	1	6	15	14	25	4	1	0	0	0	0	66	66	0.0%	2300.0%
	Peterborough and Stamford Hospitals NHS Foundation Trust	0	1	3	4	8	1	1	0	0	0	0	18	17	5.9%	4700.0%
	Plymouth Hospitals NHS Trust	1	2	6	7	8	1	1	0	0	0	0	26	24	8.3%	5400.0%
	Poole Hospital NHS Foundation Trust	0	0	11	18	10	1	0	0	0	0	0	40	40	0.0%	2300.0%
	Portsmouth Hospitals NHS Trust	0	0	9	11	12	0	1	0	0	0	0	33	30	10.0%	5800.0%
	Royal Berkshire NHS Foundation Trust	0	0	10	20	12	4	1	0	0	0	0	47	38	23.7%	6400.0%
	Royal Cornwall Hospitals NHS Trust	0	2	2	7	8	2	0	0	0	0	0	21	20	5.0%	4300.0%
	Royal Devon and Exeter NHS Foundation Trust	1	1	8	12	4	3	1	0	0	0	0	30	29	3.4%	3800.0%
	Royal Free London NHS Foundation Trust	0	0	4	4	4	3	1	0	0	0	0	16	20	-20.0%	100.0%
	Royal Surrey County Hospital NHS Foundation Trust	3	0	4	28	36	3	1	0	0	0	0	75	75	0.0%	2300.0%
	Royal United Hospital Bath NHS Trust	0	0	7	7	3	1	0	0	0	0	0	18	18	0.0%	2300.0%
	Sheffield Teaching Hospitals NHS Foundation Trust	0	2	21	44	8	3	1	0	0	0	0	79	72	9.7%	5700.0%
	South Devon Healthcare NHS Foundation Trust	0	1	4	4	11	3	1	0	0	0	0	24	23	4.3%	3900.0%
	South Tees Hospitals NHS Foundation Trust	2	2	18	26	14	2	0	0	0	0	0	64	64	0.0%	2300.0%
	Southend University Hospital NHS Foundation Trust	0	4	8	10	9	3	0	1	0	0	0	35	31	12.9%	5900.0%
	Taunton and Somerset NHS Foundation Trust	0	2	8	6	8	1	1	0	0	0	0	26	24	8.3%	5400.0%
	The Christie NHS Foundation Trust	1	11	30	60	20	7	1	0	0	0	0	130	123	5.7%	4600.0%
	The Clatterbridge Cancer Centre NHS Foundation Trust	0	9	25	49	30	11	4	0	1	0	0	129	125	3.2%	3700.0%
	The Ipswich Hospital NHS Trust	0	1	5	8	5	2	1	0	0	0	0	22	27	-18.5%	400.0%
	The Newcastle Upon Tyne Hospitals NHS Foundation Trust	0	2	23	36	8	2	1	0	0	0	0	72	72	0.0%	2300.0%
	The Royal Marsden NHS Foundation Trust	13	0	19	23	33	7	5	0	1	0	0	101	108	-6.5%	1300.0%
	The Royal Wolverhampton NHS Trust	0	1	11	19	9	1	1	0	0	0	0	42	41	2.4%	3600.0%
	The Shrewsbury and Telford Hospital NHS Trust	0	1	6	10	4	0	1	0	0	0	0	22	25	-12.0%	600.0%
	United Lincolnshire Hospitals NHS Trust	0	1	10	8	13	5	0	1	0	0	0	38	36	5.6%	4500.0%
	University College London Hospitals NHS Foundation Trust	0	1	10	11	11	12	4	1	0	0	0	50	51	-2.0%	2100.0%
	University Hospital of North Staffordshire NHS Trust	0	6	8	13	11	2	1	0	0	0	0	41	34	20.6%	6300.0%
	University Hospital Southampton NHS Foundation Trust	0	3	15	20	15	2	1	0	0	0	0	56	48	16.7%	6200.0%
	University Hospitals Birmingham NHS Foundation Trust	1	0	18	28	25	3	0	1	0	0	0	76	76	0.0%	2300.0%
	University Hospitals Bristol NHS Foundation Trust	2	3	12	16	20	4	0	2	0	0	0	59	64	-7.8%	1000.0%
	University Hospitals Coventry and Warwickshire NHS Trust	0	0	12	16	18	1	1	0	0	0	0	48	47	2.1%	3500.0%
	University Hospitals of Leicester NHS Trust	5	1	6	25	5	1	1	0	0	0	0	44	49	-10.2%	800.0%
<b>England Total</b>		<b>43</b>	<b>101</b>	<b>584</b>	<b>903</b>	<b>665</b>	<b>185</b>	<b>51</b>	<b>12</b>	<b>2</b>	<b>0</b>	<b>0</b>	<b>2546</b>	2533	0.5%	3100.0%
N Ireland	Belfast Health and Social Care Trust	0	0	37	25	17	7	1	0	0	0	0	87	83	4.8%	4100.0%
<b>N Ireland Total</b>		<b>0</b>	<b>0</b>	<b>37</b>	<b>25</b>	<b>17</b>	<b>7</b>	<b>1</b>	<b>0</b>	<b>0</b>	<b>0</b>	<b>0</b>	<b>87</b>	83	4.8%	4100.0%
Scotland	NHS Greater Glasgow and Clyde	0	1	35	54	27	4	1	0	0	0	0	122	108	13.0%	6000.0%
	NHS Grampian	0	1	7	12	6	0	1	0	0	0	0	27	27	0.0%	2300.0%
	NHS Highland	0	2	3	9	3	0	1	0	0	0	0	18	17	5.9%	4700.0%
	NHS Lothian	1	0	19	26	18	0	2	0	0	0	0	66	61	8.2%	5200.0%
	NHS Tayside	0	2	4	10	11	2	1	0	0	0	0	30	34	-11.8%	700.0%
<b>Scotland Total</b>		<b>1</b>	<b>6</b>	<b>68</b>	<b>111</b>	<b>65</b>	<b>6</b>	<b>6</b>	<b>0</b>	<b>0</b>	<b>0</b>	<b>0</b>	<b>263</b>	247	6.5%	4900.0%
Wales	Abertawe Bro Morgannwg University Health Board	3	0	6	16	12	2	1	0	0	0	0	40	38	5.3%	4400.0%
	Betsi Cadwaladr University Health Board	0	2	8	10	9	7	1	0	0	0	0	37	38	-2.6%	2000.0%
	Velindre NHS Trust	0	1	16	30	30	7	1	1	0	0	0	86	89	-3.4%	1900.0%
<b>Wales Total</b>		<b>3</b>	<b>3</b>	<b>30</b>	<b>56</b>	<b>51</b>	<b>16</b>	<b>3</b>	<b>1</b>	<b>0</b>	<b>0</b>	<b>0</b>	<b>163</b>	165	-1.2%	2200.0%
<b>Grand Total</b>		<b>47</b>	<b>110</b>	<b>719</b>	<b>1095</b>	<b>798</b>	<b>214</b>	<b>61</b>	<b>13</b>	<b>2</b>	<b>0</b>	<b>0</b>	<b>3059</b>	3028	1.0%	3200.0%



### UK Radiotherapy Workforce at 1st November 2012 Establishment by Whole Time Equivalent





# A Multidisciplinary Census of the Radiotherapy Workforce in the

## SCoR Census of the Radiotherapy Workforce in the UK – 1st November 2012

Country	AfC	Post holder on career break	Post holder on long term sick leave	Post holder on maternity leave
UK NHS	3	0 0.0%	0 0.0%	0 0.0%
	4	0 0.0%	3 10.7%	7 5.4%
	5	4 18.2%	5 17.9%	18 14.0%
	6	12 54.5%	8 28.6%	62 48.1%
	7	5 22.7%	10 35.7%	34 26.4%
	8a	1 4.5%	2 7.1%	7 5.4%
	8b	0 0.0%	0 0.0%	1 0.8%
	8c	0 0.0%	0 0.0%	0 0.0%
	8d	0 0.0%	0 0.0%	0 0.0%
	9	0 0.0%	0 0.0%	0 0.0%
	N/A	0 0.0%	0 0.0%	0 0.0%
<b>UK Total</b>		22	28	129
<b>Percentage of post holders</b>		0.7%	0.9%	4.2%

# A Multidisciplinary Census of the Radiotherapy Workforce in the UK – 1st November 2012

Ratio of SCoR to IPEM Staff: WTE

Highlighted in blue = Data missing from 2012 census and so data from 2011 census is used

Country	RT Provider Trust / Health Board	SCoR	SCoR % of Total	SCoR Rank in country	IPEM	IPEM % of Total	IPEM Rank in country	Grand Total
England	Barking, Havering and Redbridge University Hospitals NHS Trust	26.8	60.5%	3900.0%	17.5	39.5%	1200.0%	44.30
	Barts Health NHS Trust	31.96	66.0%	2700.0%	16.5	34.0%	2400.0%	48.46
	Brighton and Sussex University Hospitals NHS Trust	45.84	55.1%	4600.0%	37.39	44.9%	500.0%	83.23
	Cambridge University Hospitals NHS Foundation Trust	62.9	65.4%	2800.0%	33.3	34.6%	2300.0%	96.20
	Colchester Hospital University NHS Foundation Trust	38.14	78.2%	200.0%	10.63	21.8%	4900.0%	48.77
	Derby Hospitals NHS Foundation Trust	42.17	78.1%	300.0%	11.81	21.9%	4800.0%	53.98
	East and North Hertfordshire NHS Trust	51.97	61.6%	3600.0%	32.38	38.4%	1500.0%	84.35
	Gloucestershire Hospitals NHS Foundation Trust	47.14	68.8%	2000.0%	21.4	31.2%	3100.0%	68.54
	Guy's and St Thomas' NHS Foundation Trust	78.28	71.0%	1700.0%	32	29.0%	3400.0%	110.28
	Hull and East Yorkshire Hospitals NHS Trust	48.6	58.9%	4100.0%	33.9	41.1%	1000.0%	82.50
	Imperial College Healthcare NHS Trust	49	63.6%	2900.0%	28	36.4%	2200.0%	77.00
	Lancashire Teaching Hospitals NHS Foundation Trust	69.5	79.4%	100.0%	18	20.6%	5000.0%	87.50
	Leeds Teaching Hospitals NHS Trust	90.63	60.8%	3800.0%	58.4	39.2%	1300.0%	149.03
	Maidstone and Tunbridge Wells NHS Trust	79.3	44.6%	5000.0%	98.4	55.4%	100.0%	177.70
	Norfolk and Norwich University Hospitals NHS Foundation Trust	51.84	74.5%	700.0%	17.78	25.5%	4400.0%	69.62
	North Cumbria University Hospitals NHS Trust	14.42	58.0%	4300.0%	10.45	42.0%	800.0%	24.87
	North Middlesex University Hospital NHS Trust	24.1	72.8%	1200.0%	9	27.2%	3900.0%	33.10
	Northampton General Hospital NHS Trust	35.6	70.3%	1800.0%	15.01	29.7%	3300.0%	50.61
	Nottingham University Hospitals NHS Trust	56.61	71.3%	1600.0%	22.8	28.7%	3500.0%	79.41
	Oxford University Hospitals NHS Trust	67.1	73.5%	1100.0%	24.2	26.5%	4000.0%	91.30
	Peterborough and Stamford Hospitals NHS Foundation Trust	14.8	67.9%	2200.0%	7	32.1%	2900.0%	21.80
	Plymouth Hospitals NHS Trust	23.59	57.6%	4500.0%	17.4	42.4%	600.0%	40.99
	Poole Hospital NHS Foundation Trust	40.25	72.5%	1300.0%	15.27	27.5%	3800.0%	55.52
	Portsmouth Hospitals NHS Trust	37	63.0%	3300.0%	21.7	37.0%	1800.0%	58.70
	Royal Berkshire NHS Foundation Trust	40.44	66.5%	2300.0%	20.33	33.5%	2800.0%	60.77
	Royal Cornwall Hospitals NHS Trust	17.58	51.7%	4700.0%	16.4	48.3%	400.0%	33.98
	Royal Devon and Exeter NHS Foundation Trust	29.2	67.9%	2100.0%	13.8	32.1%	3000.0%	43.00
	Royal Free London NHS Foundation Trust	19	57.6%	4400.0%	14	42.4%	700.0%	33.00
	Royal Surrey County Hospital NHS Foundation Trust	73.42	74.3%	800.0%	25.36	25.7%	4300.0%	98.78
	Royal United Hospital Bath NHS Trust	16.3	66.5%	2400.0%	8.2	33.5%	2700.0%	24.50
	Royal Wolverhampton Hospitals NHS Trust	39.5	72.2%	1400.0%	15.2	27.8%	3700.0%	54.70
	Sheffield Teaching Hospitals NHS Foundation Trust	70.57	51.6%	4800.0%	66.2	48.4%	300.0%	136.77
	South Devon Healthcare NHS Foundation Trust	21.86	75.2%	600.0%	7.2	24.8%	4500.0%	29.06
	South Tees Hospitals NHS Foundation Trust	56.31	71.4%	1500.0%	22.6	28.6%	3600.0%	78.91
	Southend University Hospital NHS Foundation Trust	33.55	73.8%	1000.0%	11.9	26.2%	4100.0%	45.45
	Taunton and Somerset NHS Foundation Trust	26	74.3%	900.0%	9	25.7%	4200.0%	35.00
	The Christie NHS Foundation Trust	130.38	45.2%	4900.0%	158.2	54.8%	200.0%	288.58
	The Clatterbridge Cancer Centre NHS Foundation Trust	109	76.6%	500.0%	33.3	23.4%	4600.0%	142.30
	The Ipswich Hospital NHS Trust	19.95	58.4%	4200.0%	14.2	41.6%	900.0%	34.15
	The Newcastle Upon Tyne Hospitals NHS Foundation Trust	64.93	63.5%	3000.0%	37.3	36.5%	2100.0%	102.23
	The Royal Marsden NHS Foundation Trust	97.25	70.1%	1900.0%	41.4	29.9%	3200.0%	138.65
	The Shrewsbury and Telford Hospital NHS Trust	20.96	61.1%	3700.0%	13.36	38.9%	1400.0%	34.32
	United Lincolnshire Hospitals NHS Trust	30.81	62.1%	3400.0%	18.81	37.9%	1700.0%	49.62
	University College London Hospitals NHS Foundation Trust	45.43	66.5%	2500.0%	22.91	33.5%	2600.0%	68.34
	University Hospital of North Staffordshire NHS Trust	41.32	76.8%	400.0%	12.5	23.2%	4700.0%	53.82
	University Hospital Southampton NHS Foundation Trust	47.73	63.5%	3100.0%	27.46	36.5%	2000.0%	75.19
	University Hospitals Birmingham NHS Foundation Trust	76.5	63.1%	3200.0%	44.83	36.9%	1900.0%	121.33
	University Hospitals Bristol NHS Foundation Trust	51.3	59.5%	4000.0%	34.93	40.5%	1100.0%	86.23
	University Hospitals Coventry and Warwickshire NHS Trust	42.2	62.1%	3500.0%	25.8	37.9%	1600.0%	68.00
	University Hospitals of Leicester NHS Trust	34.19	66.0%	2600.0%	17.59	34.0%	2500.0%	51.78
<b>England Total</b>		<b>2383.22</b>	<b>64.0%</b>		<b>1343.0</b>	<b>36.0%</b>		<b>3726.22</b>
N Ireland	Belfast Health and Social Care Trust	86.6	66.3%	1	44	33.7%	1	130.60
<b>N Ireland Total</b>		<b>86.6</b>	<b>66.3%</b>		<b>44.0</b>	<b>33.7%</b>		<b>130.60</b>
Scotland	NHS Greater Glasgow and Clyde	111.52	65.2%	300.0%	59.5	34.8%	300.0%	171.02
	NHS Grampian	20.98	59.3%	400.0%	14.4	40.7%	200.0%	35.38
	NHS Highland	17.52	54.5%	500.0%	14.6	45.5%	100.0%	32.12
	NHS Lothian	62.35	65.6%	200.0%	32.7	34.4%	400.0%	95.05
	NHS Tayside	28	70.0%	100.0%	12	30.0%	500.0%	40.00
<b>Scotland Total</b>		<b>240.37</b>	<b>64.3%</b>		<b>133.2</b>	<b>35.7%</b>		<b>373.57</b>
Wales	Abertawe Bro Morgannwg University Health Board	32.1	59.8%	300.0%	21.6	40.2%	100.0%	53.70
	Betsi Cadwaladr University Health Board	35.56	72.5%	100.0%	13.5	27.5%	300.0%	49.06
	Velindre NHS Trust	74.48	64.2%	200.0%	41.5	35.8%	200.0%	115.98
<b>Wales Total</b>		<b>142.14</b>	<b>65.0%</b>		<b>76.6</b>	<b>35.0%</b>		<b>218.74</b>
<b>Grand Total</b>		<b>2852.3</b>	<b>64.1%</b>		<b>1596.8</b>	<b>35.9%</b>		<b>4449.13</b>

